

How to install Windows XP on DV9500, DV6500 and DV2500 above model notebooks without using USB floppy drive.

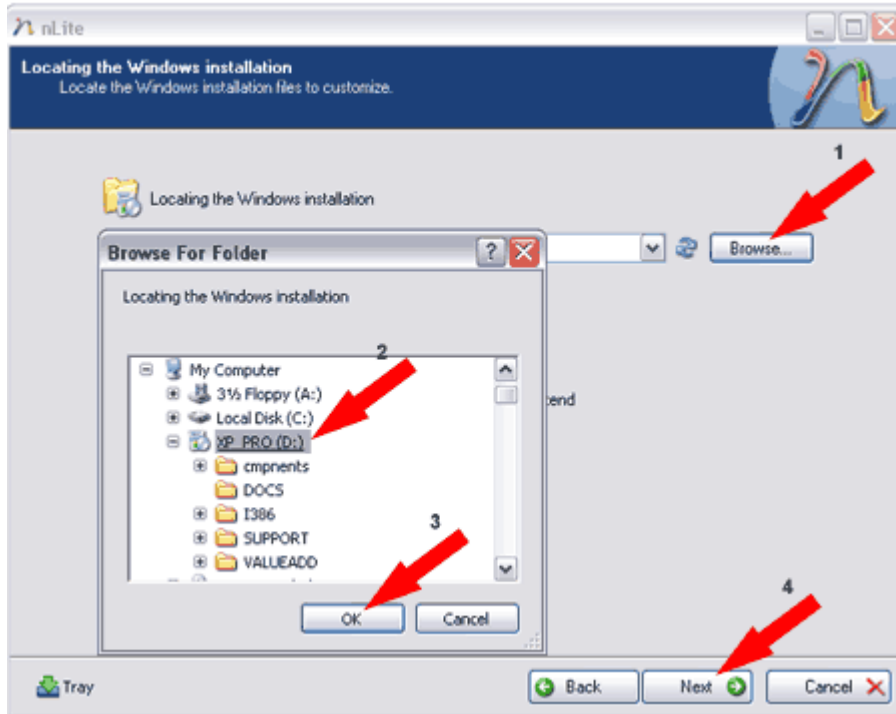
This tutorial covers the process of installing Windows XP on an HP DV9500, DV6500 and DV2500 with Intel processor series Laptop. Currently, most HP Laptops are being shipped with Windows Vista, and there is minimal driver support on the HP website site for those who want to downgrade to Windows XP. Hence the necessity for this tutorial. We will be using nLite to create a remastered Windows XP installation disk with integrated SATA drivers, so having a working CD Recorder is essential. I would also recommend having a USB flash drive handy to hold the additional drivers that will be installed after XP installation.

Before proceeding, backup any important data you have saved on your PC. In addition, it's also good idea to ensure that you have created a **HP recovery disk set** for your computer

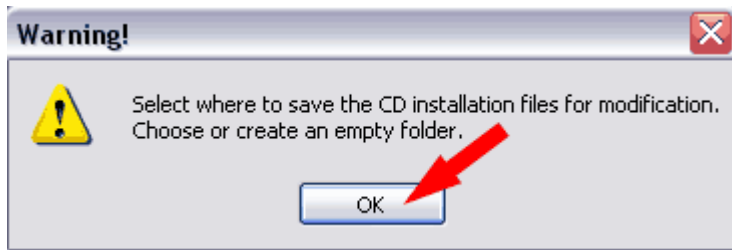
How to install Windows XP on a HP dv6500 series Laptop:

First we need to "create a new Windows XP installation disk integrated with SATA drive controller drivers" (Intel SATA AHCI Controller Driver). Otherwise Windows XP will not find the hard disk during the installation procedure.

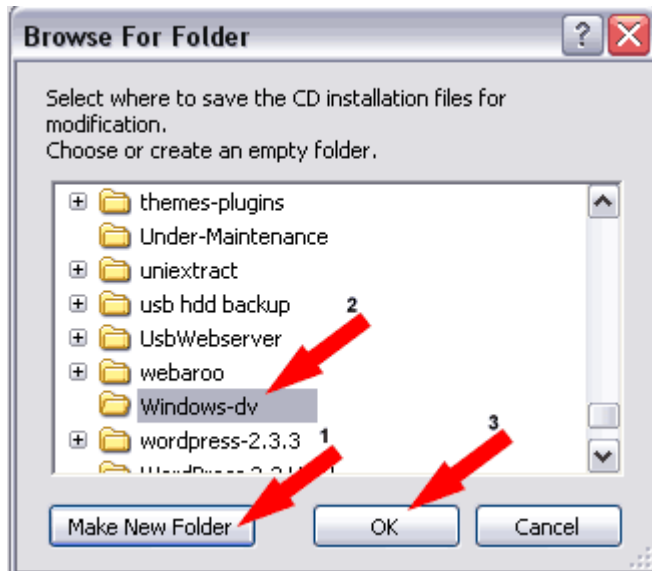
1. [Download](http://www.nliteos.com/download.html) (<http://www.nliteos.com/download.html>) and install nLite
2. [Download](ftp://ftp.hp.com/pub/softpaq/sp37001-37500/sp37005.exe) (<ftp://ftp.hp.com/pub/softpaq/sp37001-37500/sp37005.exe>) the Intel SATA AHCI Controller Driver and run the executable installing to the default c:\swsetup\SP37005 path (Note: After running the sp37005 file, it will ask you to insert a floppy, ignore the message and click on cancel)
3. Insert your **Windows XP CD** into your CD drive
4. Navigate to **Start -> Programs -> nLite** and click nLite to launch the program
5. Once you get to the **Locating the Windows installation** section, Click the **Browse** button and navigate to the **CD drive** where your Windows install CD resides, then click **OK** and **Next**



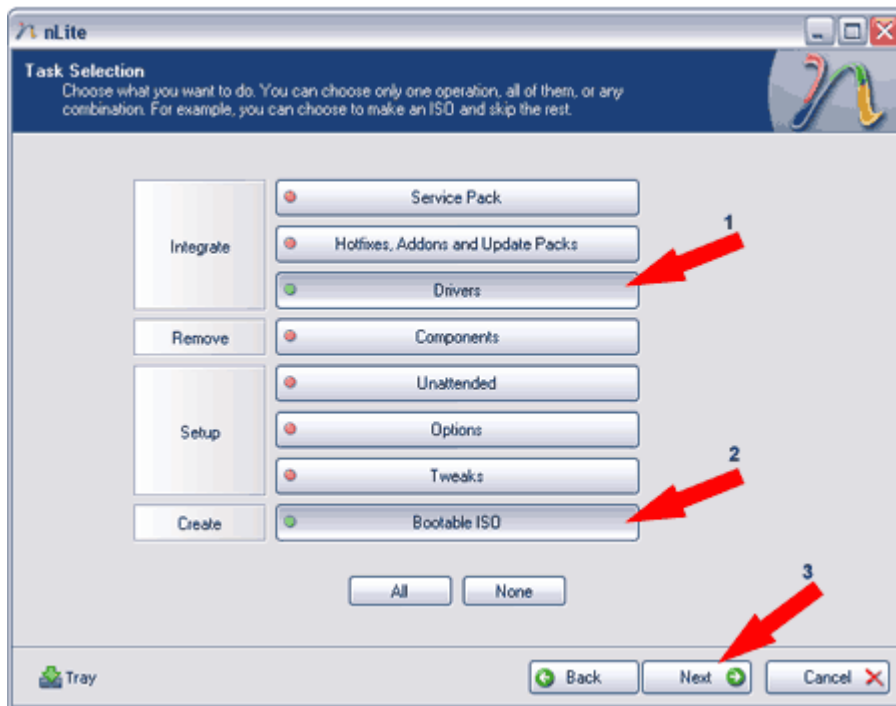
6. Next, the program will ask you where to save the CD installation files for modification, click **OK**



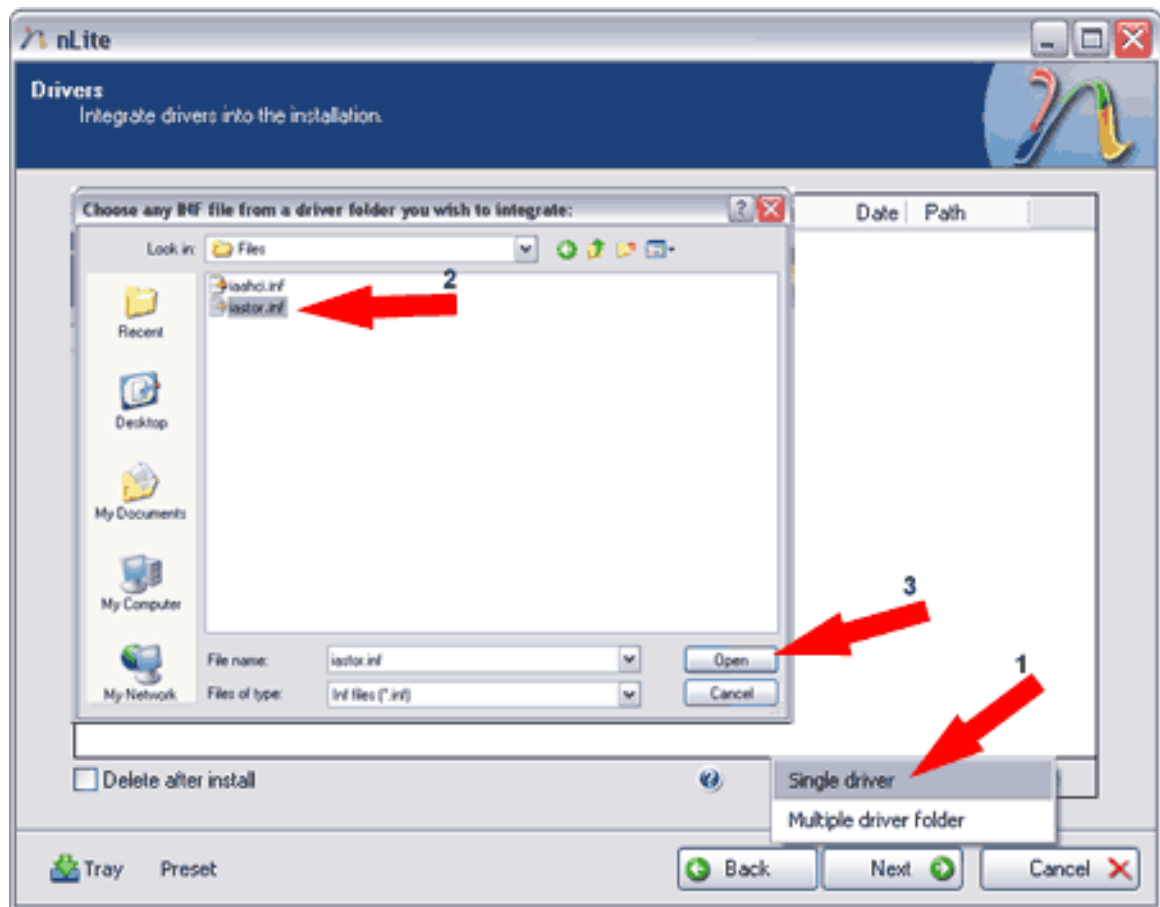
7. Next, you will need to create a folder to save to and work from. Click the **Make New Folder** button, type in a folder name, and click **OK**



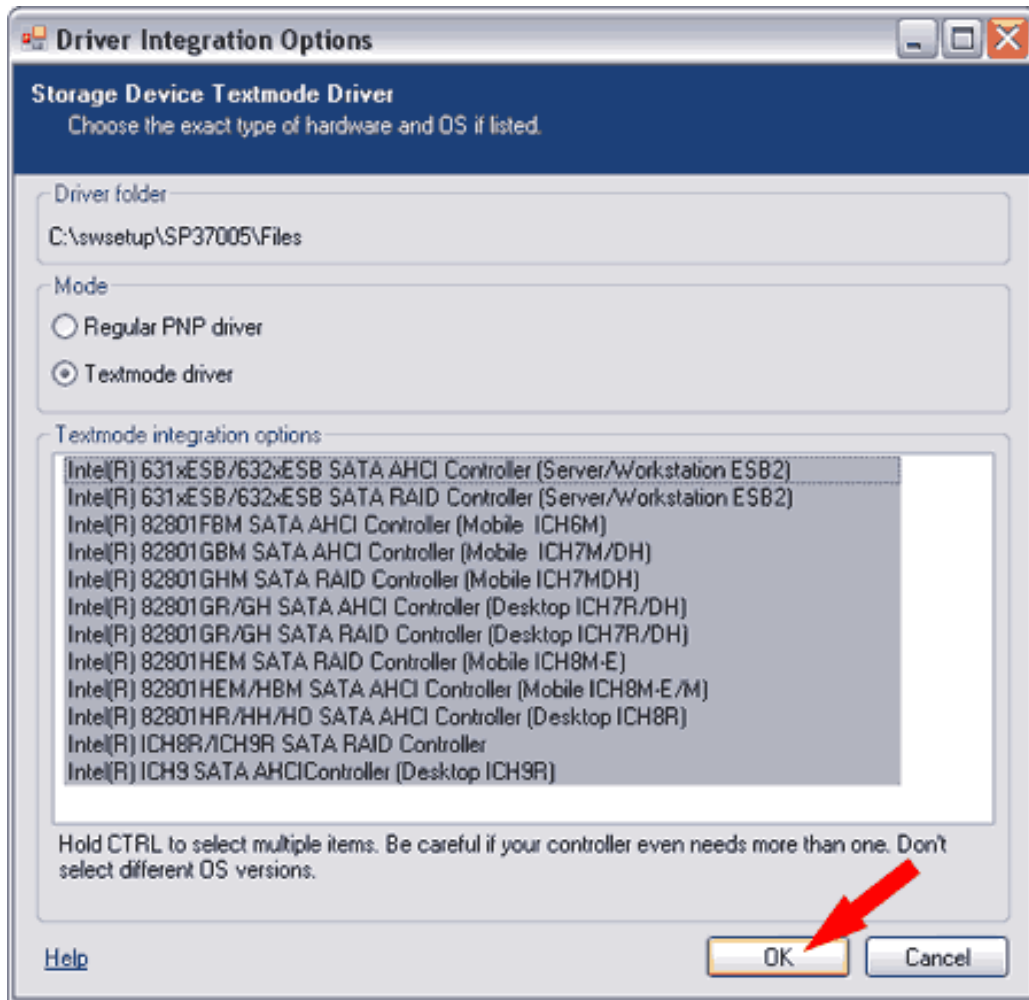
- 8.
9. Next, nLite will attempt to copy all files from the Windows installation disk to the folder you have created. Once it has finished, click Next
10. Once you arrive at the Task Selection page, select the **Drivers** and **Bootable ISO** option and then click Next



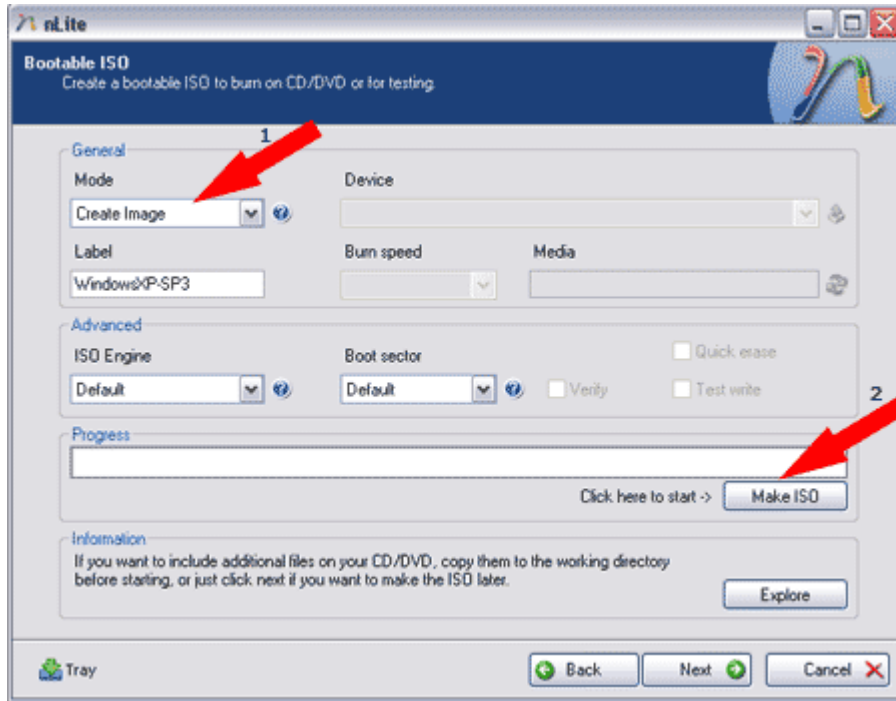
11. Next to select the SATA drivers to integrate. Click Insert, select **Single driver** and navigate to the c:\swsetup\SP37005\Files and click iastor.inf and click Open



12. Next, select "ALL" of the driver files listed and then click OK



13. Next, when prompted to start the process Click **OK**
14. After the process has finished, click **Next** till you arrive at the **Bootable ISO** page
15. I prefer to **Create and ISO Image** and then use other software to burn the ISO to a CD



16. Next, find your newly created ISO and burn your ISO to a CD using your preferred burning software
17. Insert the remastered Windows XP CD into your HP dv6500 series Laptop and proceed to install Windows XP

Installing Drivers for Windows XP and your HP dv6500 series Laptop:

Windows XP should now be installed on your HP dv6500 series Laptop. Next, you will need to install the related system, audio, network and video drivers for your new XP install. I am assuming that you have a wired internet connection established, if not you will need to use another PC to download the driver pack and then extract the files to a USB device.

1. [Download](#) the Driver Pack .
2. Extract the **Driver Pack**
3. Navigate to where you extracted the Driver Pack files and run `chipset - infinst_autol.exe` to install the Chipset Drivers and reboot
4. Once rebooted, navigate back to the Driver Pack files and run `intel matrix - iata78_enu.exe` to install the Matrix Storage Manager Drivers and reboot once again

5. After reboot, to install the nVidia Graphics Drivers, extract **nv_gfgo_101.34-2kxp32.exe** and run **Setup.exe** from the extracted folder. Click **Continue Anyway** if a popup dialog box appears warning you that the driver is unsigned
6. To install the Audio Drivers, extract files from the **realek HD audio - WDM_R183.zip** and run **Setup.exe** from the extracted folder
7. Navigate back to the Driver Pack files and run **UAA - sp32646.exe**
8. Next, extract the files from **realek HD audio - WDM_R183.zip** and run **Setup.exe** from the extracted folder
9. To install the modem drivers from the **motorola modem - Windows_SM56_6.12.07_DFV.zip**
10. Next, run **synaptics touchpad - sp35444.exe**
11. Next, run **quicklaunch - sp34796.exe**. If you get a few popup **New Hardware Found** windows. Choose one and click **No**, then click **Next**. Choose **Automatic** then click **Finish**.
12. Proceed to install any additional drivers you might need from the **Driver Pack** For example: Ethernet Card or Wireless drivers